

1

From the App Store or Google Play Store, search for, download, and install the App called:



ON BIKE SHARE

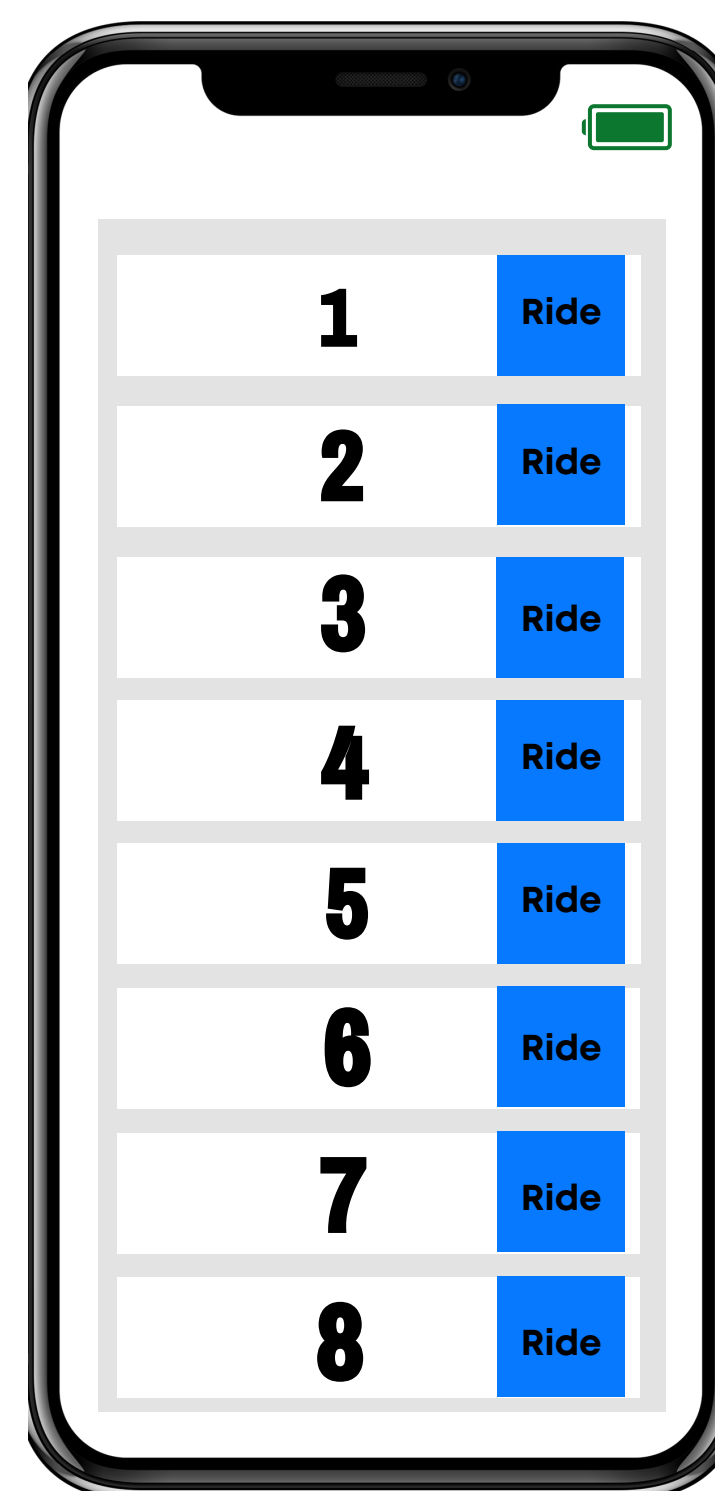


4

Press **RIDE** for the bike you want to use. The App will unlock the bike from the rack.

Not able to see bikes?

1. Turn off WiFi and use Cellular.
2. Make sure Bluetooth is on.
3. Disconnect from other Bluetooth devices.
4. Get within 10-15 feet of bikes.

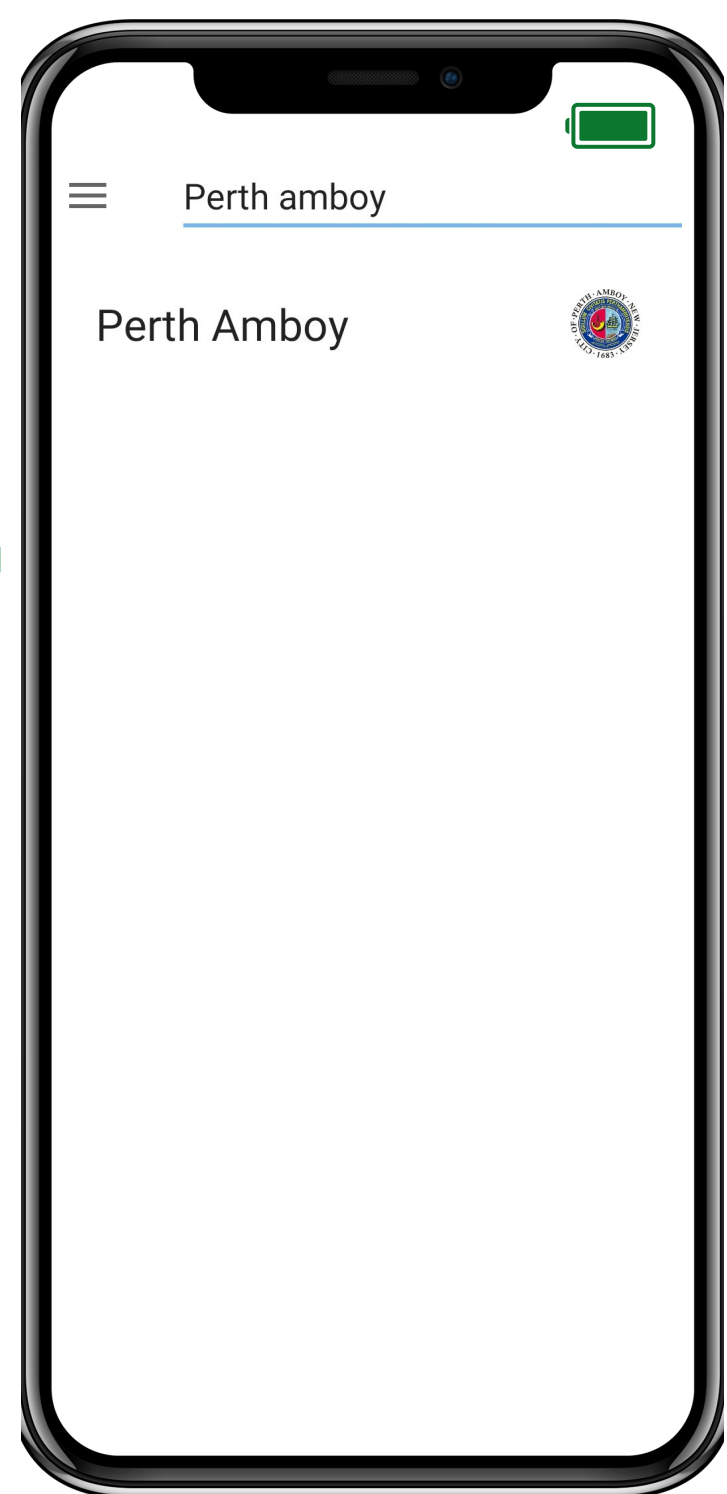


2

Once the App is installed, it will prompt you to 'JOIN SYSTEM.' Type in 'PERTH AMBOY' and select it from the list.

READ and **ACCEPT** the waiver.

MUST BE 18 YEARS of AGE to use the Bikeshare program



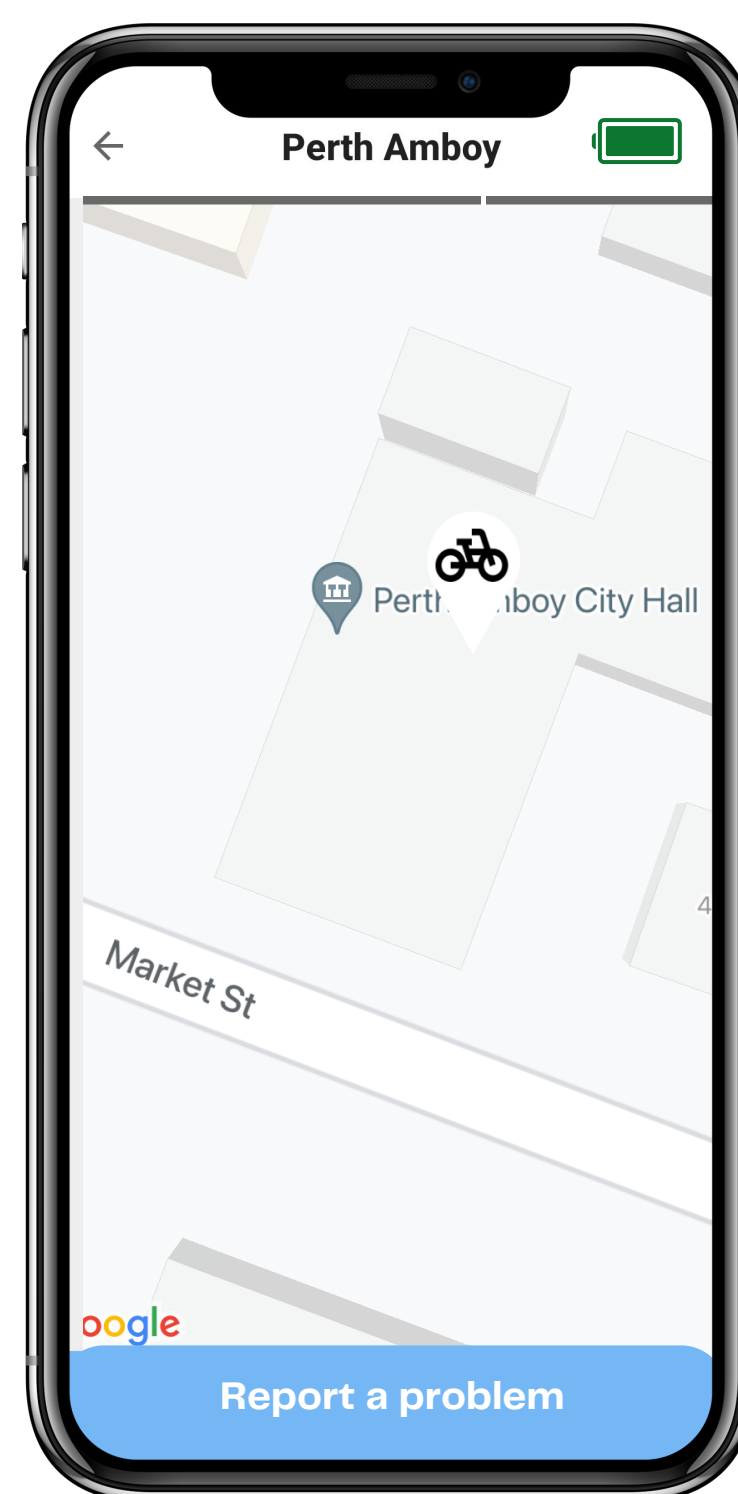
5

The bike lock will **BEEP** when it unlocks.

1. You have 7 seconds to remove the bike from the rack.
2. Inspect the bike before each ride.
3. Use the **REPORT A PROBLEM** button if the bike needs service.

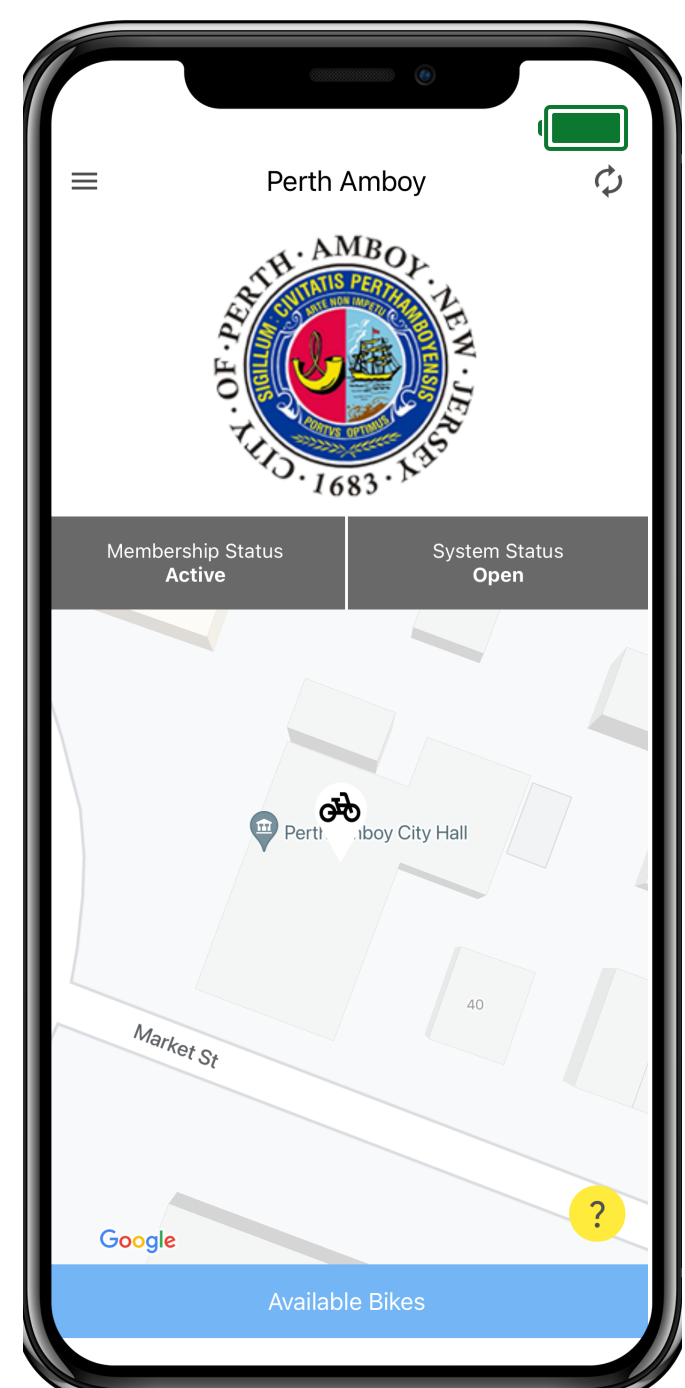


PERTH AMBOY
MAYOR CABA'S
WELLNESS CAMPAIGN



3

Once registration is approved, the App will show an **AVAILABLE BIKES** button at the bottom of the screen. To **Checkout a Bike**, go to the bike station and, within App, press **AVAILABLE BIKES**.



6

To **RETURN A BIKE**, roll the bike up to the rack and secure the lock to the rack pin.

PULL BACK on the bike to confirm it is secured to the rack.

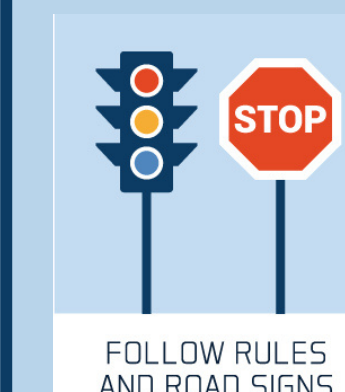
NOTE: Your ride will end automatically in the system the next time you or another rider search for an available bike from the main screen.



SAFETY TIPS FOR BICYCLE RIDERS:

OBEY ALL TRAFFIC LAWS

In New Jersey, bicycles have the same rights and responsibilities as motor vehicles.



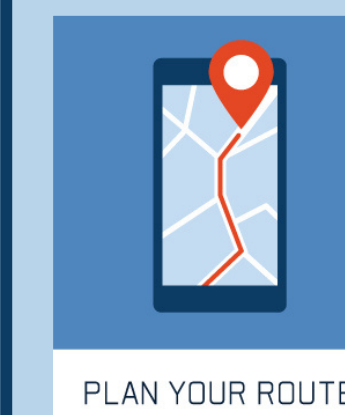
- Ride on the right
- Obey all signals
- Ride in a single file or side by side with another cyclist when there's no obstruction to traffic.
- Always ride in the same direction as the traffic

WEAR AN APPROVED BICYCLE HELMET



- All riders are strongly encouraged to wear a properly fitted and fastened helmet.

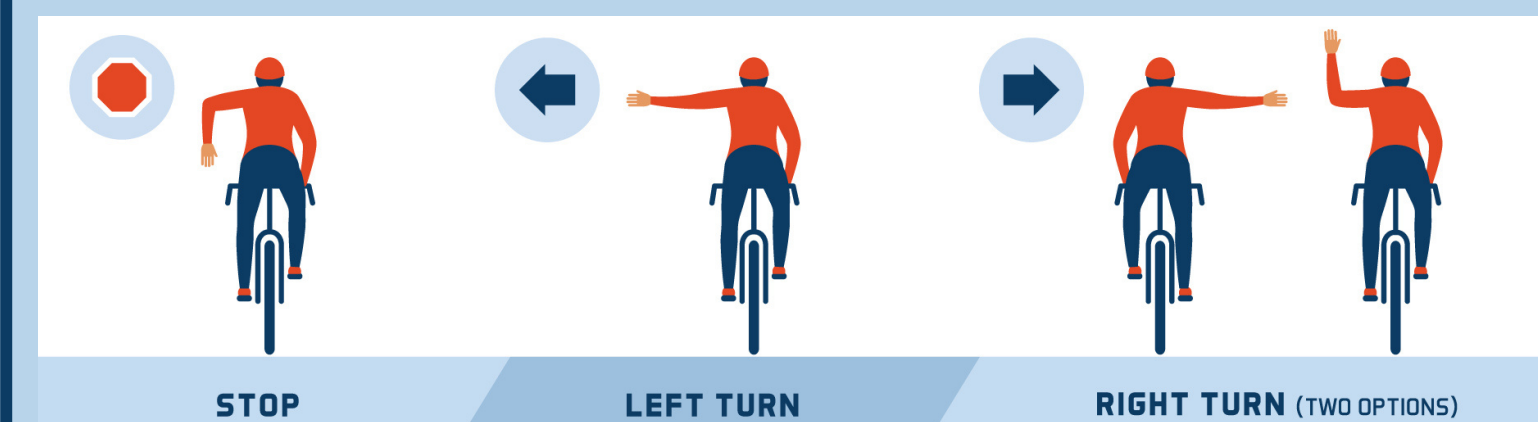
RIDE WITHIN YOUR ABILITIES



- Avoid busy streets
- Ride a properly sized bicycle

SIGNAL AND COMMUNICATE

Use hand signals to ensure that you let other road users know in advance that you will change lanes, turn, and slowing down or stopping.



DO NOT:

- Attempt stunts or tricks
- Overload the bike with extra riders
- Hold onto moving vehicles for a ride
- Weave in and out of traffic or between cars

Source: <https://www.nj.gov/oag/hts/bike-tips.html>